



**KETTLES by LEE**



**PROCESS SYSTEMS & EQUIPMENT**

**POMPES et PROCÉDÉS**  
**Inox** inc.  
PUMPS and PROCESS

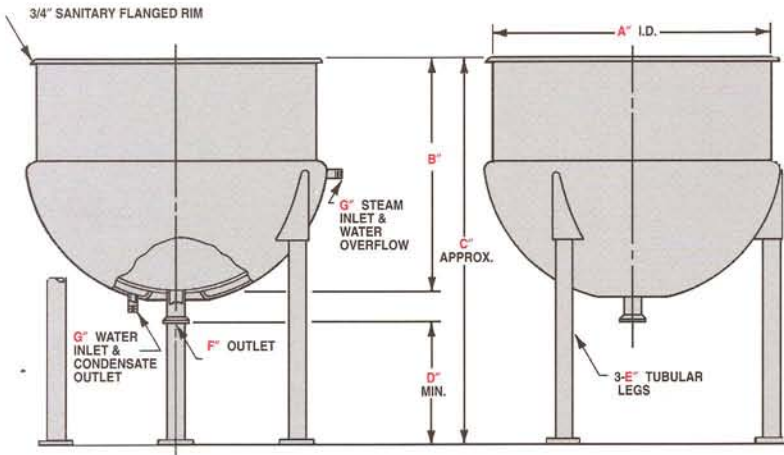
6650, rue P.E. Lamarche  
St-Léonard, Québec  
H1P 1J7  
tél.: (514) 744-0224  
1-888-881-0224  
fax: (514) 744-4121  
[www.inoxpumps.com](http://www.inoxpumps.com)

# LEE QUALITY KETTLES

Lee stainless steel hemispherical-bottom kettles are designed to meet all processing requirements. They are built to ASME specifications and are available in various jacket styles and pressure ranges and with a wide range of accessories. Kettles may also be modified or specially built to customer specifications.



The Style D super-jacket permits both heating with steam and cooling with water. The "D" jacket has a large annular space thus offering fast heating and cooling cycles. As a result this style has proven most popular in a wide variety of processing applications.



## STYLE D

**SUPER JACKET  
STATIONARY  
WITH UNIFLOW  
COIL JACKET**

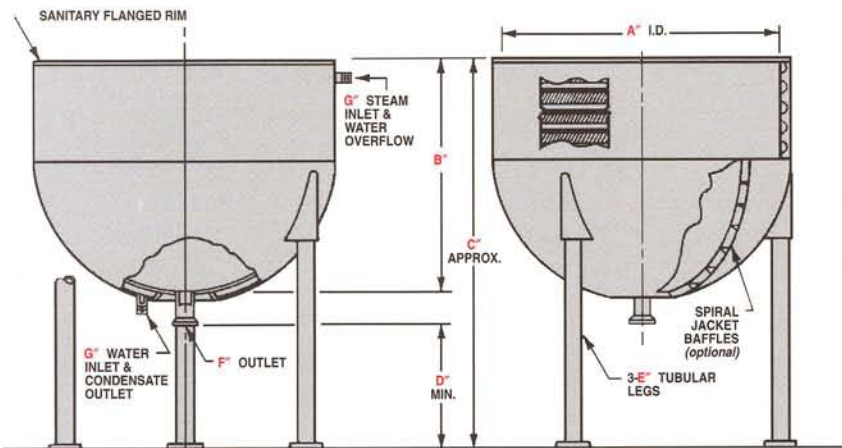
### CAPACITY

	5	10	15	20	25	30	40	50	60	75	80
DIMENSIONS	A	16 1/4	17 1/8	18 1/4	22	23	23	25 1/2	29 1/2	32	36
	B	10	14	16 1/2	17	20 1/4	22	23 1/2	23	24	25
	C	26 1/8	30 1/8	32 1/8	33 1/8	36 1/8	38 1/8	39 1/8	39 1/8	40 1/8	41 1/8
	D	15	15	15	15	15	15	15	15	15	15
	E	1 1/2	1 1/2	1 1/2	1 1/2	1 1/2	1 1/2	1 1/2	1 1/2	1 1/2	2
	F	1 1/2	1 1/2	1 1/2	1 1/2	1 1/2	1 1/2	1 1/2	1 1/2	1 1/2	2
	G	3/4	3/4	3/4	3/4	3/4	3/4	3/4	3/4	3/4	1

### CAPACITY

	100	125	150	200	250	300	400	500	600	750	1000
DIMENSIONS	A	36	38	42	48	52	54	58	62	66	72
	B	30	34	34 1/2	36	39	42	47	51	54	62
	C	46 1/8	50 1/8	50 1/8	52 1/8	55 1/8	58 1/8	63 1/8	67 1/8	70 1/8	88 1/8
	D	15	15	15	15	15	15	15	15	15	15
	E	2	2	3	3	3	3	3	3	3	3
	F	2	2	2	2	2	2	2	3	3	3
	G	1	1	1 1/2	1 1/2	1 1/2	1 1/2	1 1/2	2	2	2

Lee's Uniflow pressure jacket consists of a continuous coil which is automatically formed and welded to the vessel surface creating an exceptionally strong, distortion-free metal bond. Isolated hot or cold spots are eliminated with Lee's Uniflow coil jacket. This is due to its unique coil pattern which provides uniform thermal flow. Optional spiral jacket baffles are available to provide directional flow of liquid heating or cooling medium.





## STANDARD FEATURES

**All Styles:** Traditional high-polished sanitary finish, sanitary flanged rims and all stainless product contact parts.

**Outlet:** Exclusive Lee bottom outlet design permits a shorter outlet fitting. Sanitary Acme threaded or Tri-Clamp ferrule provided on stationary kettles.

**Support:** Stainless steel pipe legs with fixed floor flanges on stationary and tilting kettles.

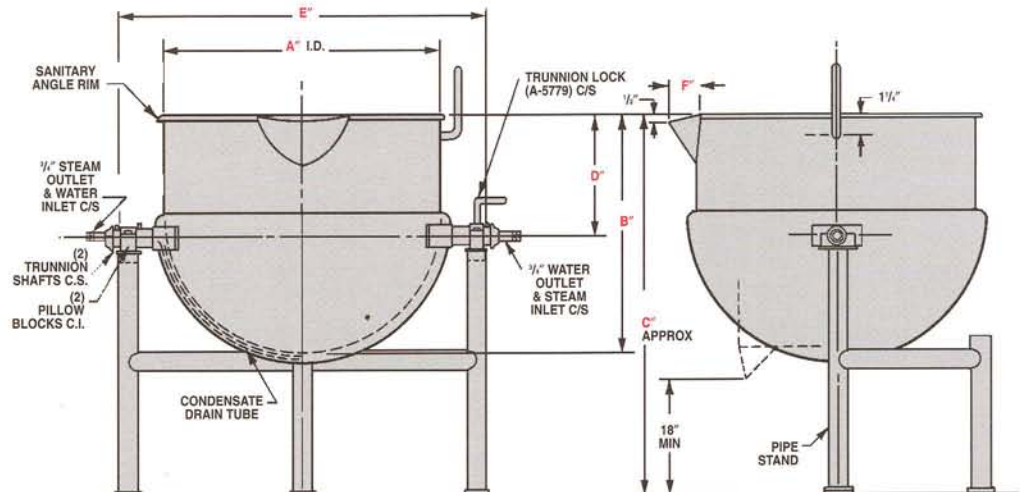
**Trunnion Style:** Free-pouring spout, safety latch, tilt handle on CD style and hydraulic tilting on style CHD.

## STYLE CD

**SUPER JACKET  
TRUNNION  
MOUNTED WITH  
MANUAL TILT**

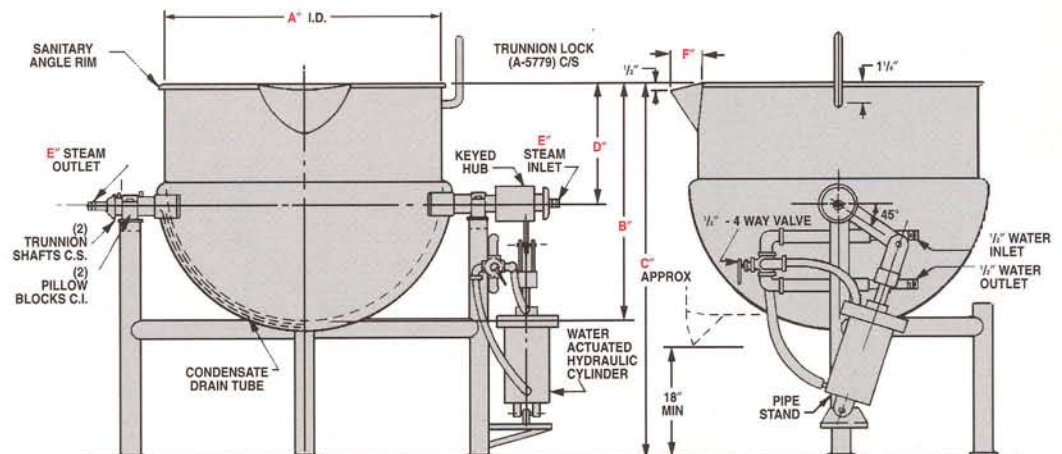
This CD style has a jacket as described but is trunnion-mounted and has a pouring lip for tilt-pouring. An outlet or valve may be added to the bottom for drainage or emptying. The positive latching meets Federal safety standards.

CAPACITY		5	10	15	20
DIMENSIONS	A	16 <sup>3</sup> / <sub>4</sub>	17 <sup>5</sup> / <sub>8</sub>	18 <sup>3</sup> / <sub>4</sub>	22
	B	10	14	16 <sup>1</sup> / <sub>2</sub>	17
	C	32 <sup>3</sup> / <sub>4</sub>	37	39 <sup>1</sup> / <sub>2</sub>	41 <sup>1</sup> / <sub>8</sub>
	D	4 <sup>5</sup> / <sub>8</sub>	8 <sup>3</sup> / <sub>16</sub>	10 <sup>9</sup> / <sub>16</sub>	9 <sup>7</sup> / <sub>8</sub>
	E	26 <sup>1</sup> / <sub>8</sub>	27	28 <sup>1</sup> / <sub>8</sub>	31 <sup>3</sup> / <sub>8</sub>
	F	2 <sup>1</sup> / <sub>4</sub>	2 <sup>1</sup> / <sub>2</sub>	2 <sup>1</sup> / <sub>2</sub>	2 <sup>1</sup> / <sub>4</sub>



## STYLE CHD

**SUPER JACKET  
TRUNNION MOUNTED  
WITH HYDRAULIC  
CYLINDER**



Identical to the manual tilt models, Lee can provide hydraulically tilted trunnion kettles in capacities ranging from 25 through 1,000 gallons.

CAPACITY		25	30	40	50	60	75	80	100	125	150	200	250	300
DIMENSIONS	A	23	23	25 <sup>1</sup> / <sub>2</sub>	29 <sup>1</sup> / <sub>2</sub>	32	32	36	36	38	42	48	52	54
	B	20 <sup>1</sup> / <sub>4</sub>	22	23 <sup>1</sup> / <sub>2</sub>	23	24	27 <sup>1</sup> / <sub>2</sub>	25	30	34	34 <sup>1</sup> / <sub>2</sub>	36	39	42
	C	44	46	47 <sup>1</sup> / <sub>2</sub>	48	49 <sup>1</sup> / <sub>2</sub>	53	50 <sup>1</sup> / <sub>2</sub>	55 <sup>1</sup> / <sub>2</sub>	60	61 <sup>1</sup> / <sub>2</sub>	64	67	70
	D	12 <sup>1</sup> / <sub>2</sub>	14	14 <sup>1</sup> / <sub>4</sub>	12 <sup>3</sup> / <sub>4</sub>	12 <sup>1</sup> / <sub>2</sub>	16	11 <sup>1</sup> / <sub>2</sub>	16 <sup>1</sup> / <sub>2</sub>	19 <sup>1</sup> / <sub>2</sub>	19	17 <sup>1</sup> / <sub>2</sub>	18 <sup>1</sup> / <sub>2</sub>	20 <sup>1</sup> / <sub>2</sub>
	E	3 <sup>3</sup> / <sub>4</sub>	3 <sup>3</sup> / <sub>4</sub>	3 <sup>3</sup> / <sub>4</sub>	3 <sup>3</sup> / <sub>4</sub>	3 <sup>3</sup> / <sub>4</sub>	3 <sup>3</sup> / <sub>4</sub>	3 <sup>3</sup> / <sub>4</sub>	3 <sup>3</sup> / <sub>4</sub>	3 <sup>3</sup> / <sub>4</sub>	1	1	1	1
	F	2 <sup>3</sup> / <sub>4</sub>	3	3	3	3 <sup>1</sup> / <sub>2</sub>	3 <sup>1</sup> / <sub>2</sub>	3 <sup>1</sup> / <sub>2</sub>	3 <sup>1</sup> / <sub>2</sub>	4	4	5	5	5



# OPTIONAL AND ACCESSORY EQUIPMENT

## Instrumentation

A wide variety of temperature sensing control and recording instruments is available. Probe type sensors can be used in open kettles; but where scraper blade agitators are installed, it is recommended that a stainless steel flush mounted sensor be used. With today's processing techniques becoming ever more critical, temperature sensing or control instruments are desirable for heat transfer vessels.



MOTOR  
SPEED CONTROL



PROBE-TYPE  
SENSOR



FLUSH MOUNT  
SENSOR

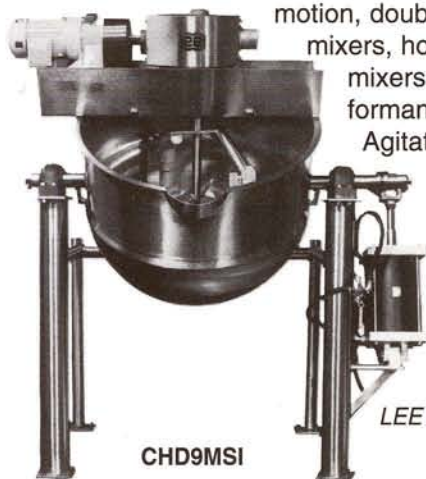


TEMPERATURE  
RECORDER/CONTROLLER

## Agitators

Lee heavy-duty agitation systems are designed to mix all types of products, thoroughly and efficiently. Standard styles, including single motion, double-motion, triple-motion high-shear mixers, horizontal blenders and prop-type mixers are engineered for maximum performance and reliability in all Lee vessels.

Agitator options include stationary, portable, tilting, vacuum/pressure installation and an inclined design which provides a combination of blending and folding along with thorough mixing for even high viscosity products!

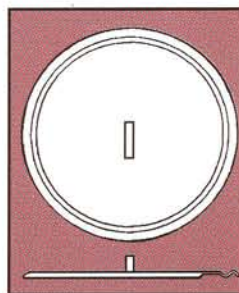


CHD9MSI

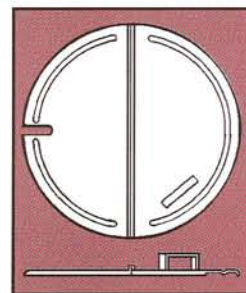
LEE Double-Motion Inclined Trunnion Kettle

## Covers

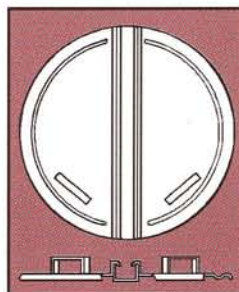
Various styles of sanitary covers are offered for all types of Lee vessels. Two- or three-piece covers can be either lift-off or hinged. Any cover can be furnished with special fittings or openings. All Lee vessels can be designed to include a vacuum/pressure style cover.



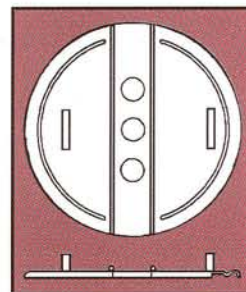
One-Piece



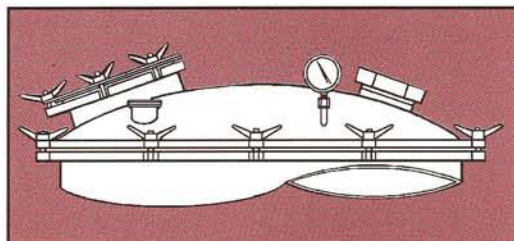
Two-Piece Sanitary Hinged



Two-Piece Lift-Off



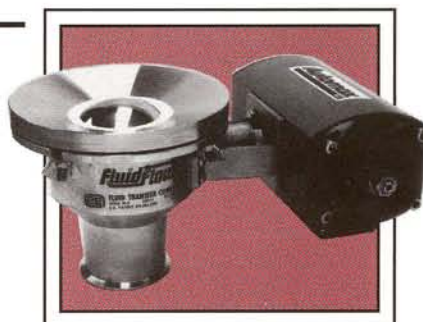
Three-Piece Hinged



Pressure or Vacuum Cover

## Flush-Type Sanitary Outlet Valves

This exclusive Lee ball valve with sanitary features is a flush type design which assures complete product processing and discharge. CIP features and heating/cooling jackets are offered for special applications. Various actuator options and controls are also available for automation. Both flush-type and in-line ball valves are USDA and 3A approved. Contact LEE Fluid Transfer Division for additional information.



Automatic Flush-Type Ball Valve



### PROCESS SYSTEMS & EQUIPMENT

DIVISION OF LEE INDUSTRIES, INC.

P.O. Box 687

Philipsburg, PA 16866

FAX: (814) 342-5660 Phone: (814) 342-0470

BULLETIN 100G 83086  
Rev 9-96